

Cyclone REGISTER 360 Registration Report



Cambridge OIS

May 23, 2023

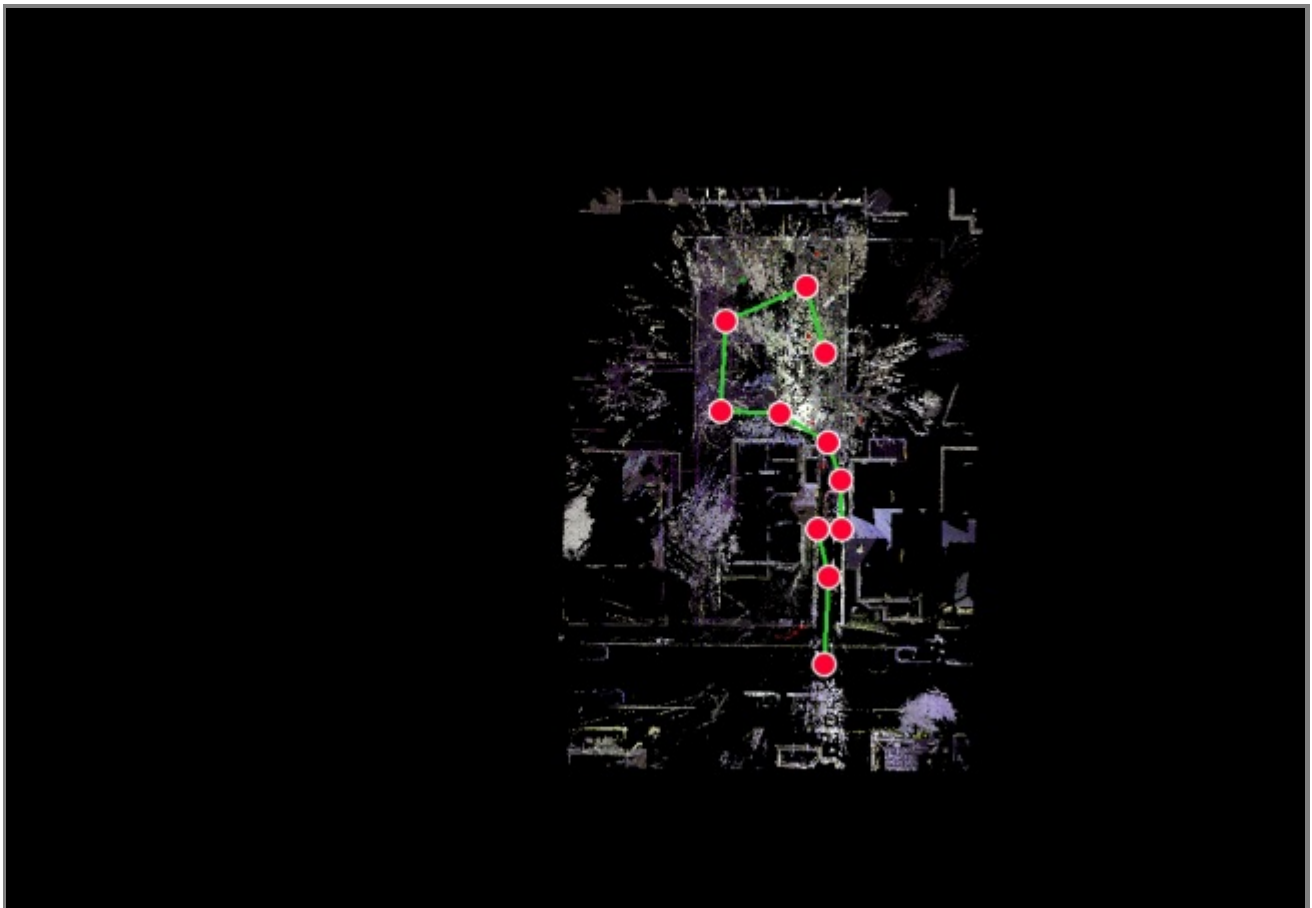
Certified by:

John E. Cronin #3931

Trooper

Massachusetts State Police

Collision Analysis and Reconstruction Section



Cambridge OIS 1.4.23

Overall Quality

Error Results for Bundle 2

Setup Count: 11
Link Count: 10
Strength: 80 %

Bundle Error 0.014 ft (US) ✓	
Overlap	Strength

Link Error Results

1 Overview

Link Name	Setup 1	Setup 2	Overlap	Abs. Mean Error
Link 7	Cambridge OIS 1.4.23-Setup 001	Cambridge OIS 1.4.23-Setup 002	53 %	0.012 ft (US)
Link 8	Cambridge OIS 1.4.23-Setup 002	Cambridge OIS 1.4.23-Setup 003	63 %	0.010 ft (US)
Link 9	Cambridge OIS 1.4.23-Setup 003	Cambridge OIS 1.4.23-Setup 004	45 %	0.035 ft (US)
Link 10	Cambridge OIS 1.4.23-Setup 004	Cambridge OIS 1.4.23-Setup 005	44 %	0.018 ft (US)
Link 11	Cambridge OIS 1.4.23-Setup 005	Cambridge OIS 1.4.23-Setup 006	58 %	0.023 ft (US)
Link 12	Cambridge OIS 1.4.23-Setup 006	Cambridge OIS 1.4.23-Setup 007	46 %	0.012 ft (US)
Link 13	Cambridge OIS 1.4.23-Setup 007	Cambridge OIS 1.4.23-Setup 008	41 %	0.018 ft (US)
Link 14	Cambridge OIS 1.4.23-Setup 008	Cambridge OIS 1.4.23-Setup 009	40 %	0.035 ft (US)
Link 15	Cambridge OIS 1.4.23-Setup 009	Cambridge OIS 1.4.23-Setup 010	54 %	0.015 ft (US)
Link 16	Cambridge OIS 1.4.23-Setup 010	Cambridge OIS 1.4.23-Setup 011	56 %	0.012 ft (US)

2 Details

Link Name	Setup 1	Setup 2	Overlap	Abs. Mean Error
Link 7	Cambridge OIS 1.4.23- Setup 001	Cambridge OIS 1.4.23- Setup 002	53 %	0.012 ft (US)
		Cloud to Cloud Target		0.012 ft (US)
			Mean Target Error:	--

Link Name	Setup 1	Setup 2	Overlap	Abs. Mean Error
Link 8	Cambridge OIS 1.4.23- Setup 002	Cambridge OIS 1.4.23- Setup 003	63 %	0.010 ft (US)
		Cloud to Cloud Target	Mean Target Error:	0.010 ft (US) --

Link Name	Setup 1	Setup 2	Overlap	Abs. Mean Error
Link 9	Cambridge OIS 1.4.23- Setup 003	Cambridge OIS 1.4.23- Setup 004	45 %	0.035 ft (US)
		Cloud to Cloud Target	Mean Target Error:	0.035 ft (US) --

Link Name	Setup 1	Setup 2	Overlap	Abs. Mean Error
Link 10	Cambridge OIS 1.4.23- Setup 004	Cambridge OIS 1.4.23- Setup 005	44 %	0.018 ft (US)
		Cloud to Cloud Target	Mean Target Error:	0.018 ft (US) --

Link Name	Setup 1	Setup 2	Overlap	Abs. Mean Error
Link 11	Cambridge OIS 1.4.23- Setup 005	Cambridge OIS 1.4.23- Setup 006	58 %	0.023 ft (US)
		Cloud to Cloud Target	Mean Target Error:	0.023 ft (US) --

Link Name	Setup 1	Setup 2	Overlap	Abs. Mean Error
Link 12	Cambridge OIS 1.4.23- Setup 006	Cambridge OIS 1.4.23- Setup 007	46 %	0.012 ft (US)
		Cloud to Cloud Target	Mean Target Error:	0.012 ft (US) --

Link Name	Setup 1	Setup 2	Overlap	Abs. Mean Error
Link 13	Cambridge OIS 1.4.23- Setup 007	Cambridge OIS 1.4.23- Setup 008	41 %	0.018 ft (US)
		Cloud to Cloud Target	Mean Target Error:	0.018 ft (US) --

Link Name	Setup 1	Setup 2	Overlap	Abs. Mean Error
Link 14	Cambridge OIS 1.4.23- Setup 008	Cambridge OIS 1.4.23- Setup 009	40 %	0.035 ft (US)
		Cloud to Cloud Target	Mean Target Error:	0.035 ft (US) --

Link Name	Setup 1	Setup 2	Overlap	Abs. Mean Error
Link 15	Cambridge OIS 1.4.23- Setup 009	Cambridge OIS 1.4.23- Setup 010	54 %	0.015 ft (US)
		Cloud to Cloud Target	Mean Target Error:	0.015 ft (US) --

Link Name	Setup 1	Setup 2	Overlap	Abs. Mean Error
Link 16	Cambridge OIS 1.4.23- Setup 010	Cambridge OIS 1.4.23- Setup 011	56 %	0.012 ft (US)
		Cloud to Cloud		0.016 ft (US)
		Target	Mean Target Error:	0.008 ft (US)

Target (Setup 1)	Target (Setup 2)	Error
Target 16	Target 18	0.006 ft (US)
Target 17	Target 19	0.010 ft (US)