

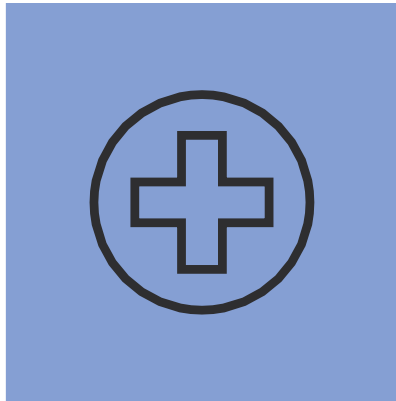
**SHATTER
SHATTER
PROOF™**

STRONGER THAN ADDICTION

*Shatterproof Presentation to
Middlesex DA Marian T. Ryan's Opioid Task Force*

Caroline Davidson, Shatterproof

Shatterproof's Impact: 3 Pillars



**Revolutionizing
the Treatment
System**



**Breaking Down
Addiction-related
Stigmas**



**Supporting and
Empowering our
Communities**

Standardize Quality Expectations

Shatterproof National Principles of Care[©]



#1. Routine screenings in every medical setting



#5. Coordinated care for every illness



#2. A personal plan for every patient



#6. Behavioral health care from legitimate providers



#3. Fast access to treatment



#7. Medication for addiction treatment



#4. Long-term disease management



#8. Recovery support services beyond medical care

Finding Addiction Treatment



- **Misinformation**
- **Limited objective or unbiased information**
- **Unclear what to look for**
- **Predatory marketing practices**
- **Hijacking ad words**
- **Patient Brokering**

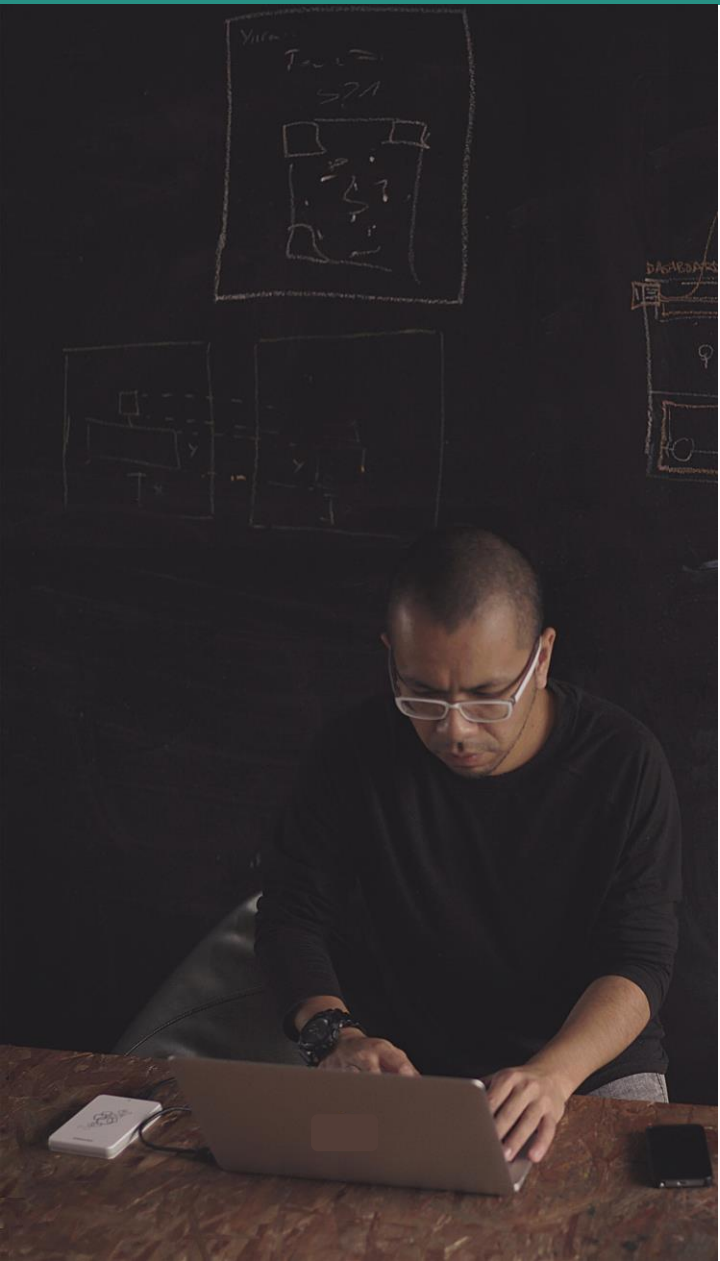


ATLAS[®]

ADDICTION TREATMENT LOCATOR,
ASSESSMENT, AND STANDARDS PLATFORM

CREATED BY SHATTERPROOF

What is ATLAS[®]?

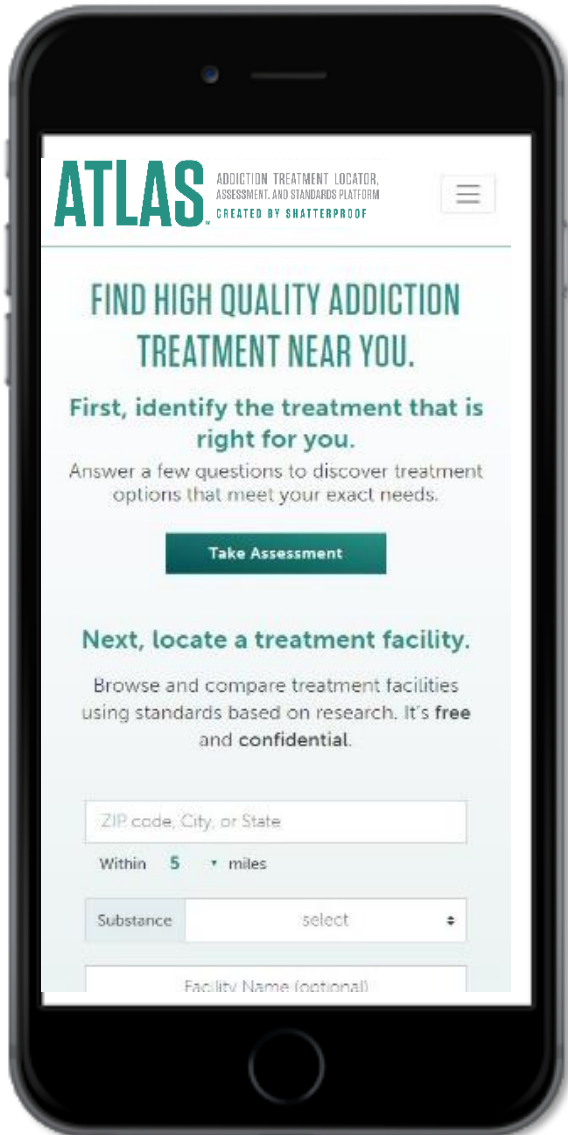


A **web-based platform** that deploys validated measures to assess the quality of **addiction treatment facilities**. These data are then **publicly displayed** as trustworthy, standardized information for people to use when seeking care.

ATLAS[®] also offers **password-protected portals** for providers, states, and health insurers to use the data to drive the adoption of best practices through policy and payment reform and provider quality improvement efforts.

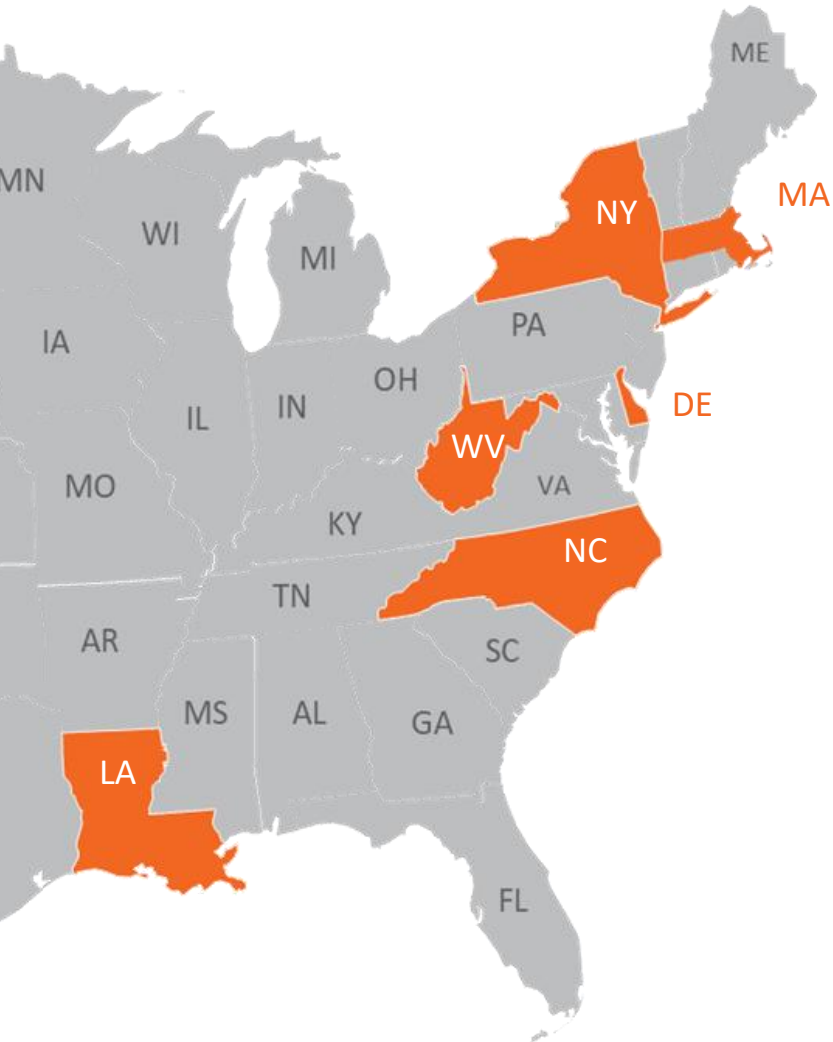
By setting a standard of quality for and bringing transparency to the addiction treatment space, ATLAS empowers patients to make informed care decisions while encouraging efforts to improve overall treatment quality.

Key Features



- Consumer-friendly needs assessment
- Transparent indicators of treatment quality
- Not funded by providers or “pay-to-play”
- Comprehensive list of facilities
- Educational content
- Professional Portals

ATLAS Phase 1 Pilot



- ✓ \$5M Funding / 6 States
- ✓ Quality Measures - NQF Expert Panel
- ✓ State Advisory Committees
- ✓ Gather / Analyze Data
- ✓ [TreatmentATLAS.org](https://www.treatmentatlas.org)
- ✓ Technical Assistant

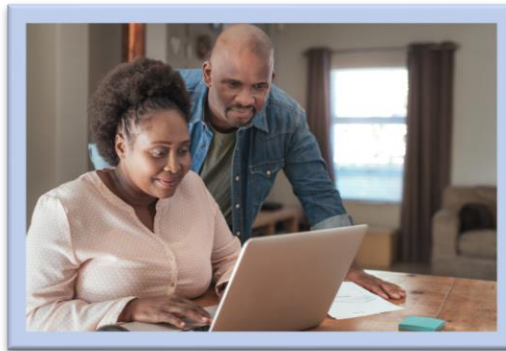
Phase 1 Data Sources

Multiple validated data sources were used to assess whether facilities are delivering care consistent with the Principles



Treatment Facility Survey

An online survey administered at the facility level that assesses processes, structures, and services.



Patient Experience Survey

A series of multiple-choice questions about the use of clinical best practices and perceptions of care and one open-ended question to be completed by patients or loved ones acting as a patient proxy.



Claims Measures

Four claims measures to be calculated by public and private health insurers that cover a significant number of individuals in ATLAS states. *Only displayed in password-protected portals.*



TreatmentATLAS.org
launched on July 21, 2020!

ATLAS Website Traffic Since Launch

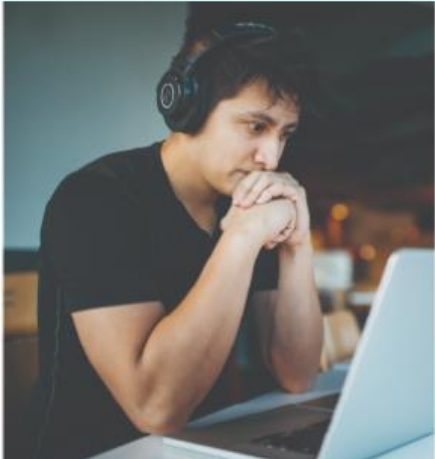
National Website Traffic

July 21, 2020 – December 13, 2020

Over **80,000** Sessions
Since Launch

STATE	SESSIONS
New York	23,012
North Carolina	14,348
Massachusetts	5,862
Louisiana	5,208
West Virginia	3,836
Delaware	1,271

ATLAS Home Page



FIND HIGH QUALITY ADDICTION TREATMENT

Confidentially, learn what treatment type might be right for your needs by answering a few questions.

[Take Assessment](#)

Find and compare treatment facilities using trustworthy information on treatment quality.

Within miles

[A note on insurance](#)

NOTE: ATLAS currently includes facilities in 6 states - Delaware, Louisiana, Massachusetts, New York, North Carolina, and West Virginia - but plans to expand nationally. [Learn more.](#)

The Addiction Treatment Needs Assessment



[Contact Us](#)

[Find Treatment](#) [Learn About Treatment](#) [About ATLAS](#)

Addiction Treatment Needs Assessment

Not sure what type of treatment is right for you or a loved one?

Take this assessment to get a recommendation

- You'll answer 13 questions.
- It will take around 10 minutes. Your responses will be anonymous.
- You'll receive guidance you can use to find the right treatment.

[Start the assessment](#)



If you or a loved one are experiencing suicidal thoughts

Call the National Suicide Prevention Lifeline to get help today [1-800-273-8255](tel:1-800-273-8255)

If you or a loved one are experiencing a life-threatening emergency

Call 911 or go to your nearest hospital

Home Page Educational Content

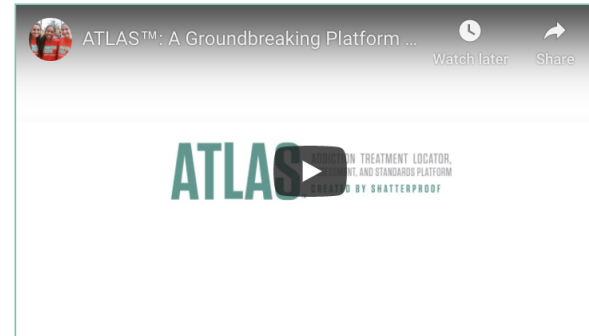
WHAT DOES HIGH-QUALITY ADDICTION TREATMENT LOOK LIKE?

High quality addiction treatment facilities should include ALL of these Shatterproof National Principles of Care®:

- **Fast Access to Treatment**
You should be able to get treatment as soon as you're ready.
- **Personalized Evaluation and Treatment Plan**
Treatment should consider your unique needs. One-size treatment does not fit all.
- **Access to Medications for Opioid or Alcohol Use Disorders**
Treatment providers should work with you to find out if a medication, which is approved by the Food and Drug Administration (FDA), may be the best choice for treating your substance use disorder.
- **Effective Behavioral Therapies for Addiction**
Certain behavioral health therapies—such as cognitive behavioral therapy and family behavior therapy—are proven to help manage and treat addiction effectively.
- **Long-term Treatment and Follow-up**
Addiction treatment should include long-term management and follow-up, not just one-time treatment.
- **Coordinated Care for Mental and Physical Health**
Your treatment plan should include treatment for other illnesses you may have, such as mental health (like depression or anxiety) and physical health conditions (like diabetes or hepatitis).
- **Additional Services to Support Recovery**
Treatment is more successful when other circumstances also are addressed, such as housing, employment, and personal relationships.

[Read more about our Principles of Care®.](#)

HOW ATLAS WORKS



Example Search Results

REFINE SEARCH

hide all | show all clear all

Within **5** miles of

Location

boston

Search

Quality Data Provided

+ Substance Focus

+ Payment Options

Private Insurance Accepted

Select one

- Treatment Type

Hospital Inpatient

Intensive Outpatient

Outpatient Treatment

Residential Treatment

+ Facility Features

+ Coordinated Care for Mental and Physical Health

+ Medications for Opioid Use Disorder (OUD)

+ Medications for Alcohol Use Disorder (AUD)

Other Languages Spoken

SEARCH RESULTS

APPLIED FILTERS:

clear all filters

Quality Data Provided ✕

Outpatient Treatment ✕

20 facilities match your search

sorted by distance

SELECTED FACILITIES TO COMPARE:

clear selections

Bridge Over Troubled Waters ✕

CleanSlate Centers, Inc. ✕

Hope House ✕

Go to Compare

New Horizons Medical, Inc.

358 Harvard Street
Brookline, MA 02446

3.5 miles
away

617-202-9222

<https://www.newhorizonsmedical.org>

TREATMENT TYPE(S):
Outpatient Treatment

Add to Compare

Arbour Counseling Services - Jamaica Plain (Green St)

157 Green St
Jamaica Plain, MA 02130

4.2 miles
away

617-524-1120

<https://www.arbourhospital.com>

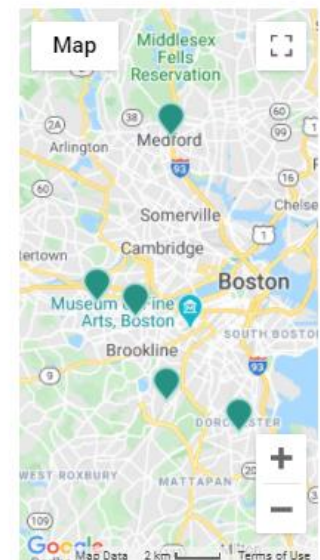
TREATMENT TYPE(S):
Outpatient Treatment, Intensive
Outpatient

Add to Compare

Interim House Inc

62 Waldeck St

4.3 miles



Quality Measures Expanded

SIGNS OF HIGH-QUALITY CARE

Data last updated 01/31/2020

This section indicates whether facilities offer services that align with the [Shatterproof National Principles of Care](#) © ⓘ.

- ✓ = Available / Meets Standards
- − = Service is not available at this facility's physical location but is available through another affiliated site.
- ✗ = Service is not available
- ⓘ = Data are not available for the facility.

Fast Access to Treatment	Helps patients in other ways than inpatient/residential beds and...	
Personalized Evaluation and Treatment Plan	Examines all of the 6 critical components of the intake process to develop the treatment plan ⓘ	
Access to Medications for Opioid or Alcohol Use Disorder	Offers FDA-approved medication for opioid use disorder ⓘ	− Different Location + see more
	Provides Naloxone (e.g., Narcan, Evzio) onsite to patients at risk for overdose ⓘ	✗
	Offers FDA-approved medication for alcohol use disorder ⓘ	− Different Location + see more
	Offers medication for mental health	✗
Effective Behavioral Therapies for Addiction	Offers behavioral therapy that has been shown to help people with addiction ⓘ	✓ + see more
	Offers individual counseling	✓

Patient Feedback


Patient Experience Survey data displays in facility profiles *once 20 responses have been collected.*

Patient feedback is collected via facility profiles and updated **every 24 hours** on the site.

PATIENT REVIEWS

Leave a review

Data last updated 01/30/2020

Patient reviews include multiple choice questions and one narrative question. Reviews are published once 20 responses have been submitted for the facility. 

Patient Experience

This section displays responses to the multiple choice questions and shows how frequently each option was selected for the facility next to the average across all facilities in the state.

Number of survey responses	FACILITY: 33	MA: 1215
----------------------------	------------------------	--------------------

click sections to expand

How much have you been helped by the treatment you got here?		
RESPONDENTS WERE HELPED...	FACILITY:	MA AVERAGE:
+ "A lot"	97%	80%

Using any number from 0 to 10, where 0 is the worst treatment program possible and 10 is the best treatment program possible, what number would you use to rate this treatment program?

Patient Feedback

This section displays narrative responses about patient experiences at the facility along with patient ratings (0 - 10) of the facility.

door on bathroom

RATED FACILITY AS: **10/10**



January 30, 2020

This place is wonderful

RATED FACILITY AS: **10/10**



January 10, 2020

Caring for patients well being.

RATED FACILITY AS: **10/10**



January 10, 2020

Example Facility Comparison

<p>Bridge Over Troubled Waters</p> <p>47 West St , Boston, MA 02111</p> <p>617-423-9575</p> <p>https://www.bridgeotw.org</p>	<p>CleanSlate Centers, Inc.</p> <p>82 Paris St FL 3 , Boston, MA 02128</p> <p>617-874-4160</p> <p>https://www.cleanslatecenters.com</p>	<p>Hope House</p> <p>8 Farnham St , Boston, MA 02119</p> <p>617-971-9360</p> <p>https://www.hopehouseboston.org</p>
--	---	---

Facility Features:

Displaying Treatment Quality Data for:	All Facility Treatment Types	All Facility Treatment Types	All Facility Treatment Types
Treatment Types Offered:	Outpatient Treatment	Outpatient Treatment	Residential Treatment, Outpatient Treatment
Substance Focus:	PCP/hallucinogens, OTC Medications (e.g., cough syrup), Opioids (prescription or heroin), Methamphetamines and other amphetamines/stimulants, Marijuana/hashish, Cocaine/crack, Benzodiazepines and other tranquilizers, Alcohol	Opioids (prescription or heroin), Alcohol	PCP/hallucinogens, Opioids (prescription or heroin), Methamphetamines and other amphetamines/stimulants, Marijuana/hashish, Cocaine/crack, Benzodiazepines and other tranquilizers, Barbiturates and other sedatives/hypnotics, Alcohol
Age-Specific Programming Available:	Young adults (ages 16-25)	Adult women (age 18+), Adult men (age 18+)	Adult women (age 18+), Adult men (age 18+)

SIGNS OF HIGH-QUALITY CARE

This section indicates whether facilities offer services that align with the Shatterproof National Principles of Care © ⓘ.

	Bridge Over Troubled Waters	CleanSlate Centers, Inc.	Hope House
<p>Fast Access to Treatment</p> <p>Offers same day or walk-in appointments</p>	✓	✓	✗
<p>Helps patients in other ways if inpatient/residential beds are not available</p> <p>+ see more</p>	Not Applicable ⓘ	Not Applicable ⓘ	✓
<p>Personalized Evaluation and Treatment Plan</p> <p>Examines all of the 6 critical factors during the intake process to develop the patient's treatment plan ⓘ</p> <p>+ see more</p>	✓	✓	✓

Exploring TreatmentATLAS.org

Addiction Treatment Needs Assessment

Educational content

Searching for a facility (near Waltham, for example)

Viewing a facility profile

High quality

Mixed quality



How can referral sources use ATLAS?

After identifying that a patient/client may need substance use disorder help...

- ☞ Take the brief Addiction Treatment Needs Assessment with the patient, or encourage the patient or their loved one to take it for them, in order to identify the appropriate level of care to explore
- ☞ Locate and compare facilities that meet the patient's needs
- ☞ Encourage the patient and/or their loved ones to leave feedback on addiction treatment facilities they have received treatment from
- ☞ Learn more about addiction, addiction treatment, and what patients should look for when accessing treatment, and encourage patients to do the same

How can treatment facilities use ATLAS?

- 👉 Locate and compare facilities that meet patients' referral needs
- 👉 Encourage patients and/or loved ones to leave feedback on their facility
- 👉 Compare services and operations at their facility to state averages
- 👉 Access technical assistance resources
- 👉 Leverage ATLAS participation for recognition or potentially higher reimbursement from payers

ATLAS & MA Substance Use Helpline

Shatterproof and Health Resources in Action are currently in the process of integrating the Helpline and ATLAS.

Integration will include...

- Crosslinking the platforms
- Training Helpline staff in using ATLAS
- Cross-promoting the platforms

Start with the Helpline

FIND ADDICTION TREATMENT, RECOVERY, AND PROBLEM GAMBLING SERVICES.

Caring, trained Helpline Specialists will help you understand the treatment system and your options. Call, chat, or search online 24/7.

HelplineMA.org OR call 800.327.5050

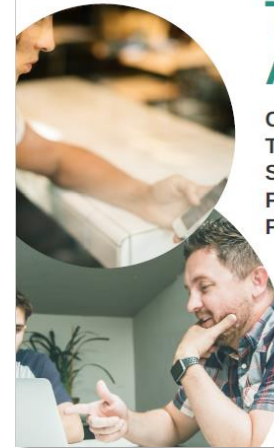


Then go to ATLAS®

COMPARE ADDICTION TREATMENT FACILITIES ON SIGNS OF QUALITY CARE AND FIND THE TREATMENT THAT FITS YOUR NEEDS.

ATLAS is focused on quality so that you can get the best care. Use the site to learn what to look for in addiction treatment, compare facilities, and read reliable patient feedback, so you or your loved one can get the treatment you need and deserve.

TreatmentATLAS.org



Interested in Telling Your Network(s) about ATLAS?

Order **FREE** digital and print flyers, postcards, business cards, posters!



Finding treatment for addiction shouldn't be overwhelming.

ATLAS is here to help you or your loved one find a path to recovery.

-  Understand what type of treatment is needed
-  Find and compare treatment facilities
-  Leave a review on your or your loved-one's treatment experience

Simple. Free. Confidential.

All available at www.TreatmentATLAS.org

Created by Shatterproof, a national non-profit focused on reversing the addiction crisis in America.

ATLAS ADDICTION TREATMENT LOCATOR, ASSESSMENT, AND STANDARDS PLATFORM
CREATED BY SHATTERPROOF



Finding treatment for addiction shouldn't be overwhelming.

www.TreatmentATLAS.org

Created by Shatterproof, a national non-profit focused on reversing the addiction crisis in America.

ATLAS ADDICTION TREATMENT LOCATOR, ASSESSMENT, AND STANDARDS PLATFORM
CREATED BY SHATTERPROOF

ATLAS is here to help you or your loved one find a path to recovery.

-  Understand what type of treatment is needed
-  Find and compare treatment facilities
-  Leave a review on your or your loved-one's treatment experience

www.TreatmentATLAS.org

Caroline Davidson, MPH | cdavidson@shatterproof.org

Additional questions or comments?

Thank
you!

Caroline Davidson, MPH

Assistant Director of State Engagement, National Treatment Quality Initiatives

cdaavidson@shatterproof.org